



**Technical Service  
BULLETIN**

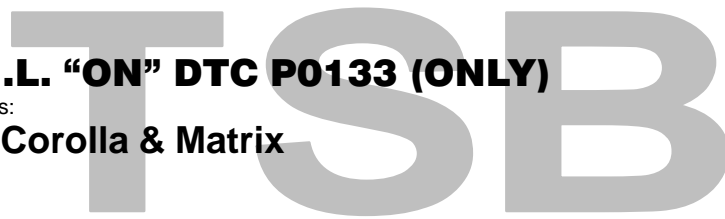
April 6, 2007

Title:

**M.I.L. "ON" DTC P0133 (ONLY)**

Models:

'04 Corolla & Matrix



**ENGINE  
EG017-07**

**Introduction** Under certain driving conditions, some 2004 model year Corolla and Matrix vehicles may exhibit a M.I.L. "ON" condition with DTC P0133 (Oxygen Sensor Circuit Slow Response [Bank 1 Sensor 1]). The Engine Control Module (ECM) (SAE term: Powertrain Control Module/PCM) logic has been modified to improve this condition.

- Applicable Vehicles**
- **2004** model year **Corolla** and **Matrix** vehicles.

**Parts  
Information**

MODEL	DRIVETRAIN		ECM SUPPLIER	PREVIOUS PART NUMBER	CURRENT PART NUMBER	PART NAME	QTY
Corolla & Matrix	2WD	MTM	Denso	89661-0Z08#	89661-0Z082	Computer, Engine Control (ECM/PCM)	1
Corolla		ATM		89661-0Z09#	89661-0Z093		1
Matrix	4WD			89661-0Z10#	89661-0Z103		1
Corolla	2WD		Delphi	89666-0233#	89666-02333		1
Matrix		89666-0234#		89666-02343	1		
-	-	-	-	-	00451-00001-LBL	Authorized Modifications Label	1

**NOTE:**

- The ECM (PCM) should NOT be replaced as part of the repair procedure.
- Authorized Modification Labels may be ordered in packages of 25 from the Materials Distribution Center (MDC) through Dealer Daily Dealer Support Materials System, or by calling the MDC at 1-800-622-2033.

**Warranty  
Information**

OP CODE	DESCRIPTION	TIME	OFF	T1	T2
EG7008	Recalibrate ECM (PCM) Engine	0.8	89661-##### 89666-#####	8A	99




**Applicable Warranty\*:**

This repair is covered under the Toyota Federal Emission Warranty. This warranty is in effect for 96 months or 80,000 miles, whichever occurs first, from the vehicle's in-service date.

\* Warranty application is limited to correction of a problem based upon a customer's specific complaint.



**Required  
SSTs**

SPECIAL SERVICE TOOLS (SSTs)	PART NUMBER	QTY	DRW**
<p><b>Toyota Diagnostic Tester Kit*</b></p> <p>NOTE:</p> <ul style="list-style-type: none"> <li>All components from this kit/set are required.</li> <li>12 Megabyte Diagnostic Tester Program Card (P/N 01002593–005) with version 14.1a Software (or later) is required.</li> </ul> 	TOY220036	1	9
<p><b>CAN Interface Module Kit*</b></p> <p>NOTE:</p> <ul style="list-style-type: none"> <li>All components from this kit/set are required.</li> </ul> 	01002744	1	9
<p><b>GR8 Battery Diagnostic Station*</b></p> 	00002–MCGR8	1	–

\* Essential SSTs.

\*\* Drawer number in SST Storage System.

**NOTE:**

- The GR8 Battery Diagnostic Station (P/N 00002–MCGR8) supersedes the Automatic Trickle Charger (P/N 00002–YA122–01) and Fast Battery Chargers (Associated P/N ASE6003 and Christie P/N CAPPDQ). P/N 00002–YA122–01, ASE6003, and CAPPDQ are now obsolete.
- Additional SSTs may be ordered by calling SPX/OTC at 1-800-933-8335.

**Calibration Identification Chart**

MODEL	DRIVETRAIN	ECM SUPPLIER	ECM (PCM)	PREVIOUS CALIBRATION ID	NEW CALIBRATION ID
Corolla & Matrix	MTM	Denso	Main	30216000 30216100	30216200
Corolla	ATM			30217000 30217100 30217200	30217300
Matrix	ATM (4WD)			30218000 30218100 30218200	30218300
Corolla	ATM	Delphi	Main	30214000 30214100	30214200
			Sub	50203000 50203100 50203200	50203300
Matrix			Main	30215000 30215100	30215200
			Sub	50204000 50204100 50204200	50204300

**Repair Procedure**

1. Check for the Authorized Modifications Label affixed to the vehicle in the location shown in Figure 1. Confirm if ECM (PCM) calibration has been updated. If the calibration listed is NOT the latest ECM (PCM) calibration — go to step 2.

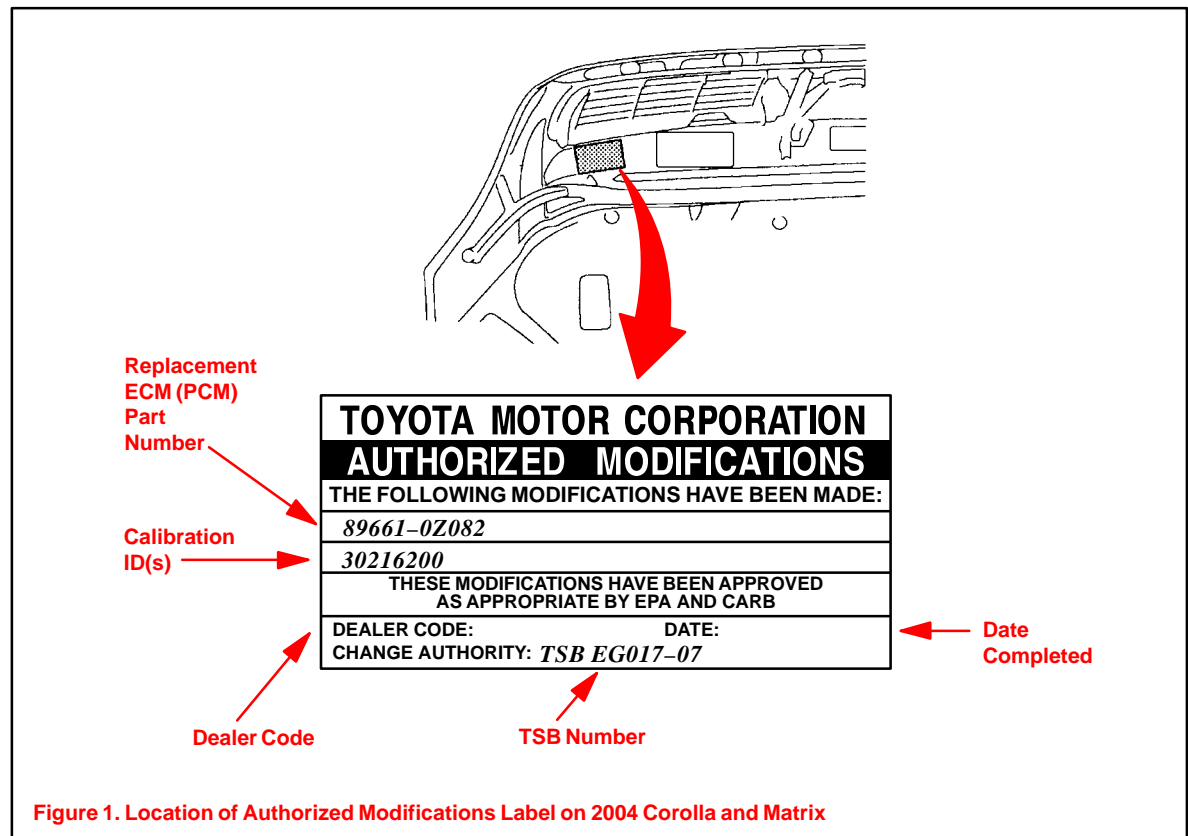
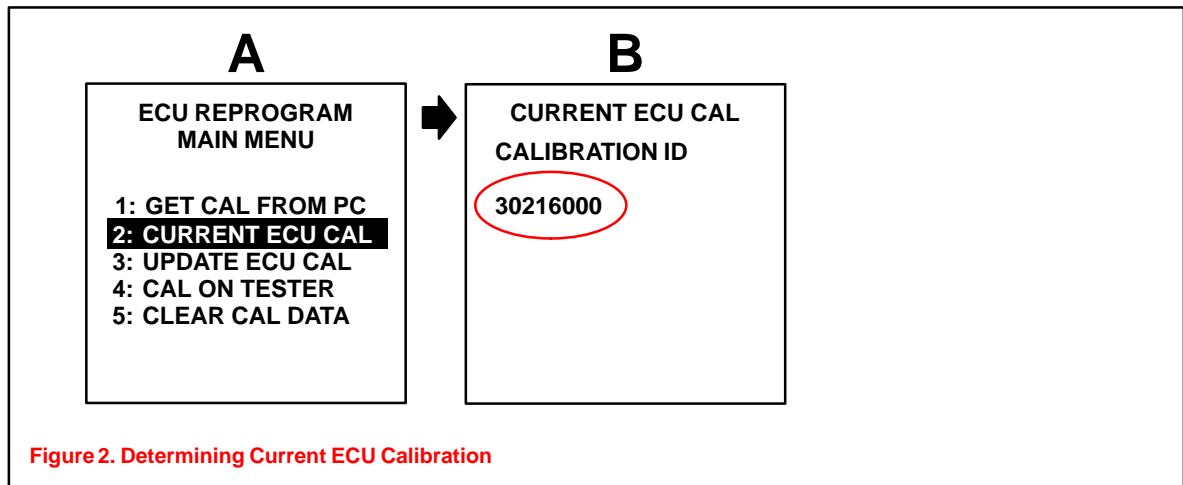


Figure 1. Location of Authorized Modifications Label on 2004 Corolla and Matrix

**Repair Procedure**  
(Continued)

2. Connect the Diagnostic Tester to the vehicle and select CURRENT ECU CAL from the ECU REPROGRAM MAIN MENU. Determine the vehicle's current ECU calibrations (see Figure 2).
  - The sample screen prints seen below are the 14.1a software version and may differ from subsequent software versions.



**NOTE:**

- If the Calibration ID matches the "Previous Calibration ID" as shown in the Calibration Identification Chart in this TSB, proceed with flash reprogramming.
- If the Calibration ID matches the "New Calibration ID" as shown in the Calibration Identification Chart, this vehicle has already been programmed. Refer to the Technical Information System (TIS) for diagnostic procedures applicable to any stored DTCs.

3. If the ECU calibration ID is NOT the same as the "New Calibration ID" listed previously, proceed to Flash Reprogram ECM (PCM).

**4. Flash Reprogram ECM (PCM)**

**NOTE:**

- The GR8 Battery charger **MUST** be used in Power Supply Mode to maintain battery voltage at 13.5 volts while flash reprogramming the vehicle.
- For details on how to use the GR8 Battery charger please refer to the GR8 Instructions Manual, located on TIS, *Diagnostics – Battery*.

Follow the procedures outlined in TSB No. SS002-01, "ECU Flash Reprogramming Process," and flash the ECM (PCM) with the NEW calibration file update.

**NOTE:**

If the "Check Engine" light is ON when the ignition is turned back ON to begin the reprogramming process, a scan tool cable problem exists. Refer to TSB No. SS004-01, "ECU Flash Reprogramming Error Message."

**Repair  
Procedure**  
(Continued)

5. Install the Authorized Modifications Label.
  - A. Using a permanent marker, enter the following information on the label:
    - ECM (PCM) part number: *[Refer to the **Parts Information** section for the **CURRENT PART NUMBER**]*
    - Calibration ID(s): *[Refer to the **Calibration Identification Chart** for the **NEW CALIBRATION ID**]*
    - Dealer Code
    - Repair Date
    - Change Authority (this TSB number): *EG017-07*
  - B. Affix the Authorized Modifications Label to the vehicle at the location shown in Figure 1. The Authorized Modifications Label is available through the MDC, P/N 00451-00001-LBL.
6. Start the engine and warm it up to normal operating temperature before test-driving.
7. Test-drive vehicle to confirm proper vehicle operation.
8. Calibration update is complete.